

HATCH GLASS INSTALLATION

Bottom rolling sliding hardware for display cabinets, bookcases and hatches

- FEATURES:
- QUIET SMOOTH ROLLING ACTION
 - WOOLPILE TOP GUIDING

SPECIFICATIONS:

Hardware fits 6mm toughened safety glass

Max panel mass: 20kg

Max panel height: 1000mm

Max panel width: 1000mm

Glass panel size MUST NOT exceed 1sqm

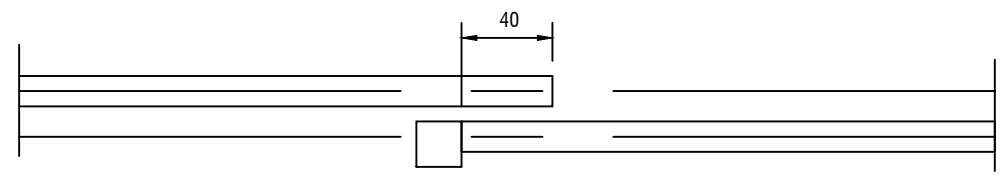
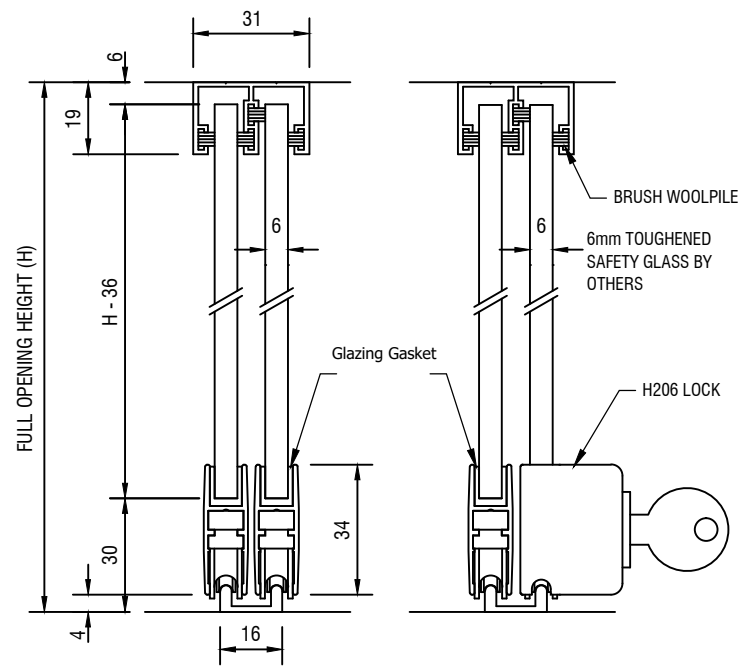
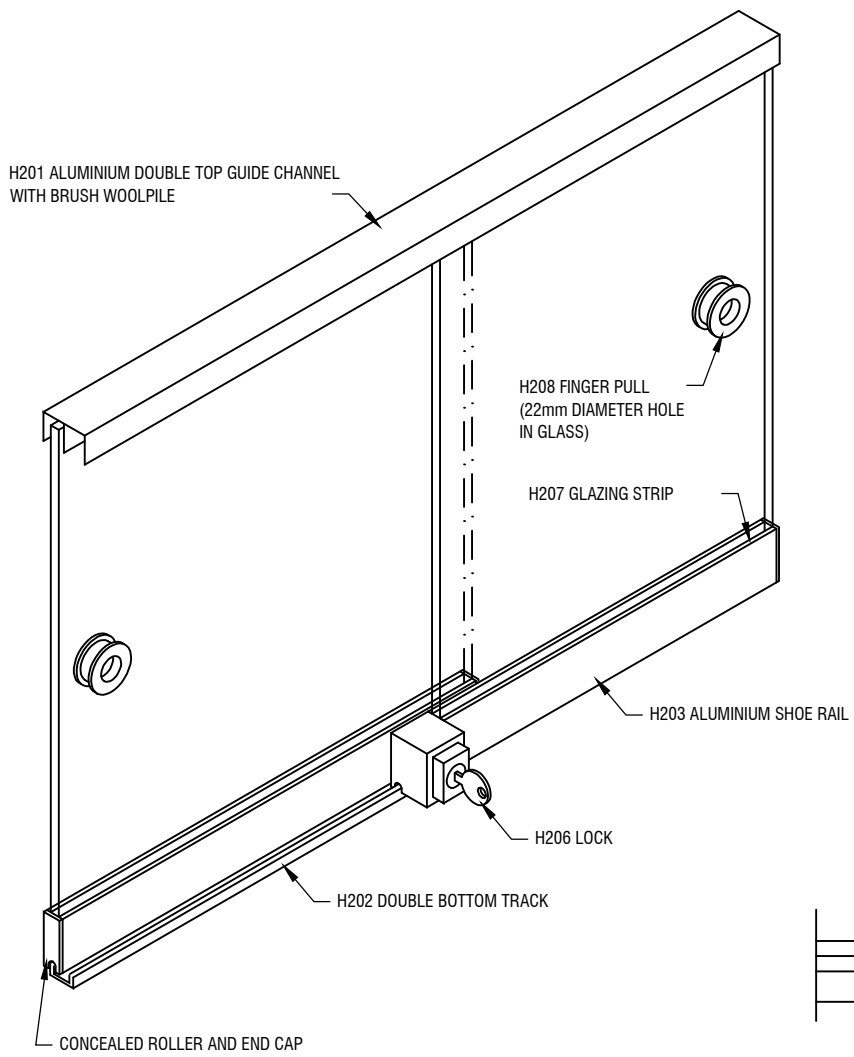
- COMPONENTS:
- H201 Anodised aluminium double top channel complete with brush woolpile
 - H202 Anodised aluminium double bottom track
 - H203 Anodised aluminium shoe rail
 - H204 Hatch ball-bearing bottom roller
 - H205 Black rail end cap
 - H207 Glazing strip
 - H208 Chromed effect finger pull
 - H206 Chrome pin lock with 2 keys (handed)

Standard finish is Natural Anodised

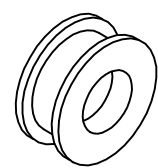
Calculation for each glass panel

Height = Opening height (H) - 36mm

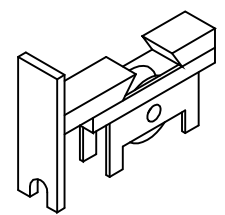
Width = Half opening Width + 20mm



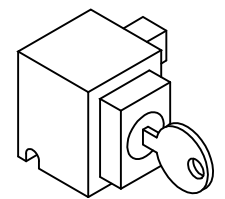
PLAN OF TWO PANELS BIPASSING SHOWING OVERLAP OF 40mm



H208 FINGER PULL
(22mm DIAMETER HOLE IN GLASS)



ROLLER AND END CAP

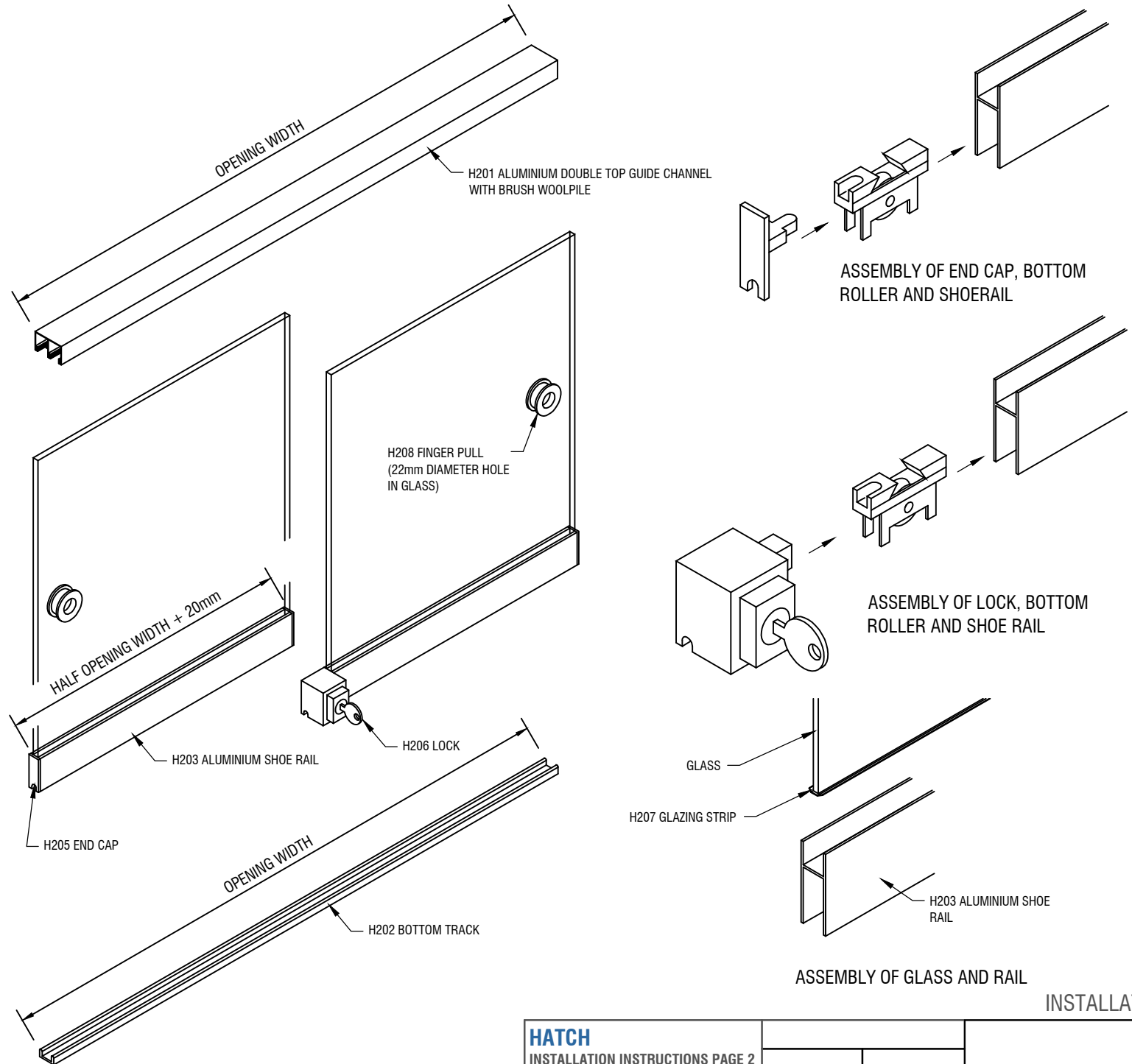


LOCK (HANDED)

FITTING GUIDE:

1. Ensure opening is square.
2. Cut track and channel to opening width and install. Ensure bottom track is plumb with top channel.
3. Cut two shoe rails to size to half opening width + 20mm each.
4. If glass is predrilled with Ø22mm holes, install finger pulls.
5. Clip end caps into rollers and slide into ends of shoerails. Secure with the two fixing screws included in the roller. (If lock is used, follow same procedure with lock positioned at the end of the shoerail at the centre of the opening.)
6. Assemble glass to shoerails by stretching glazing strip over bottom edge of glass. Push on the rail and trim the surplus with a sharp knife.
7. Lift rear panel into top channel and drop onto track. Repeat procedure with front panel.
8. Close panels with lock in middle of front panel.
9. Press lock closed and mark where pin touches rear shoerails. Remove rear panel and drill Ø9mm hole to locate lock pin. Reinstall panel.

SIZE CALCULATION FOR EACH GLASS PANEL:
 Height = Full opening height (H) - 36mm
 Width = Half of full opening + 20mm



INSTALLATION